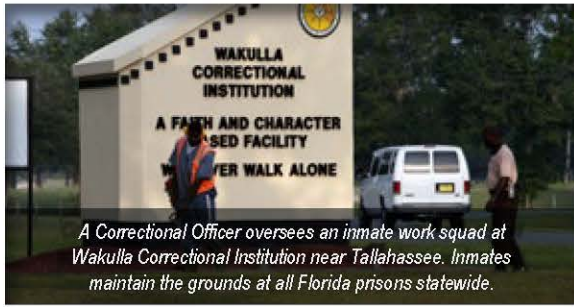


QUICK FACTS

About the Florida Department of Corrections

Revised December 2017



A Correctional Officer oversees an inmate work squad at Wakulla Correctional Institution near Tallahassee. Inmates maintain the grounds at all Florida prisons statewide.

On November 30, 2017, the Florida Department of Corrections housed 96,639 inmates in its 148 correctional facilities and supervised 167,141 offenders as part of its community supervision programs throughout the state.

The Department has over 24,000 authorized full time positions, the majority of whom are Correctional Officers or Correctional Probation Officers.

The Florida Department of Corrections defines recidivism as a return to prison for any reason within 3 years of release. The most current recidivism rate available is 25.4% (for the 2013 release cohort). For more information, please see the most recent recidivism report at: <http://www.dc.state.fl.us/pub/index.html>

Prison Life

The majority of Florida's state-run prisons are not air conditioned. All contracted prisons are air conditioned.

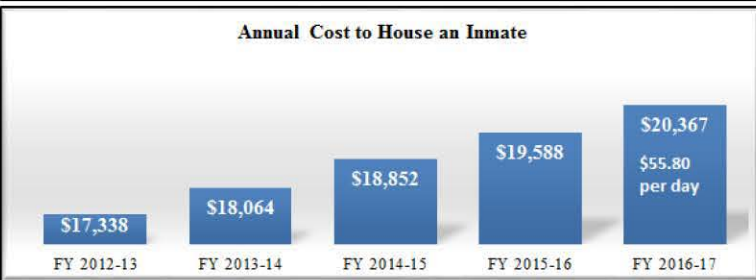
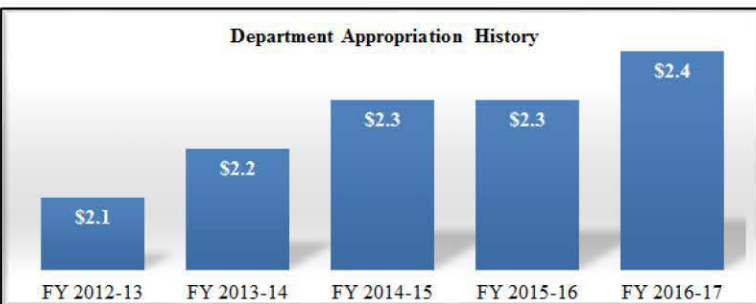
Most prison inmates live in dormitories not cells. Florida State Prison in Starke is the only Florida prison where all inmates live in single cells.

Most Florida inmates must serve a **minimum of 85%** of their sentences before release. Inmates released in November 2017 served an average of 86% of their sentences.

Prison inmates work in jobs ranging from laundry, cooking and prison maintenance to prison industries and outside work squads. Community Work Squad inmates perform services under agreements with the Department of Transportation, other state agencies such as the Division of Forestry, counties, cities, municipalities, and non-profit organizations.



Inmates cook more than 85 million meals each year for their fellow inmates.



The Department of Corrections' Farm & Edible Crop Program (FECP) grows millions of pounds of fresh vegetables each year which are planted, tended, harvested, and consumed by the inmate population. FECP benefits the inmate population by reducing idleness, providing the opportunity to learn agricultural techniques, and assisting inmates in securing gainful employment upon release.

In FY 2016-17, FECP was supported by the investment of over 400,000 man-hours of inmate labor. Additionally, crop production and donation totals surpassed 6.3 million pounds of fresh produce, which were valued in excess of \$3.1 million dollars. FECP recognized participation of 39 parent institutions, 8 satellite locations and 6 University of Florida - Institute of Florida Agriculture Sciences (IFAS) facilities. Combined, these locations utilized more than 800 acres throughout the state for fresh vegetable production.

The Department had 20,806 inmates participating in **educational programs** in FY 2016-17 (16,233 in academic programs and 4,573 in vocational programs).

During FY 2016-17, the Department awarded 1,072 General Education Development (GED) diplomas.

Approximately **12,000** inmates participated in **substance abuse treatment** during FY 2016-17.

Community Work Squads performed 3.15 million hours of work valued at more than \$38 million statewide. This provided the citizens of Florida with a net cost avoidance of approximately \$12.6 million.

Per Diem (Fiscal Year 2016-17)

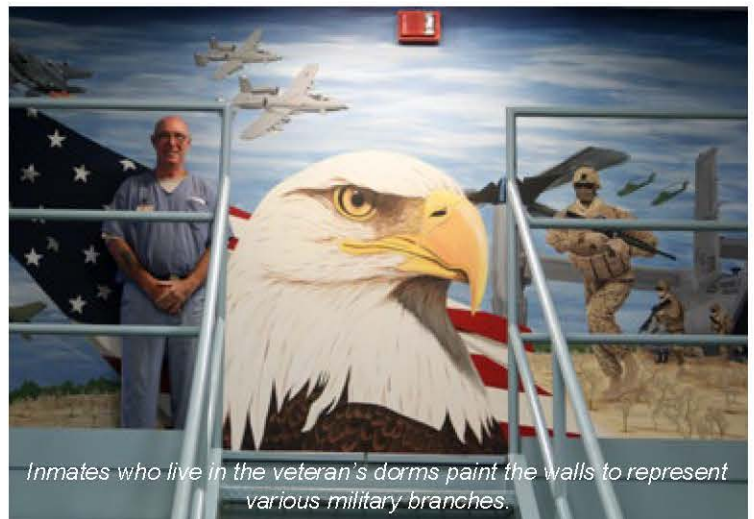
It costs **\$55.80** a day or **\$20,367** per year to house an inmate in a Florida prison during FY 2016-17.

Cost per day to supervise an offender on community supervision (without electronic monitoring): **\$5.52**

Florida prisons do not have cable television. Inmates have access to a single, donated television in most of their day rooms that services about 75 inmates per dorm. Correctional Officers control the channels and remote. Death row inmates have 13-inch (donated or purchased) television sets in their cells.

As mandated by law, all inmates have access to **libraries, religious services, medical and dental care.**

Inmates using Florida prison general libraries during FY 2016-17 borrowed 882,987 books and periodicals. This includes fiction, non-fiction, reference books, magazines, and newspapers. Law library services were provided to inmates 532,075 times throughout the state. If you or your organization would like to donate books to our general prison libraries, contact Dean Peterson at (850) 717-3470.



Inmates who live in the veteran's dorms paint the walls to represent various military branches.

During FY 2016-17, the Department collected approximately \$88.9 million for victim restitution, court costs & fines, cost of supervision, and other monetary obligations.

Community Supervision Offenders completed 1,159,961 hours of community service in FY 2016-17.

As of June 30, 2017, the statewide successful completion rate for Community Supervision Offenders was 59.7%

Salaries

Certified entry-level Correctional Officers are paid \$33,500.22 annually.

Certified entry-level Correctional Probation Officers are paid \$33,478.12 annually.

For more info, visit: www.dc.state.fl.us

From July 1, 2016 through June 30, 2017, 28,783 inmates were admitted to prison, and 30,833 inmates were released. During that same period, 83,293 offenders were placed on community supervision, and 83,474 were released from supervision.

Prison Statistics

Inmates in Florida's prisons on November 30, 2017, ranged in age from 14 to 95 years old.

Of the 96,639 inmates in Florida prisons on November 30, 2017, 93% were male and 7% female.

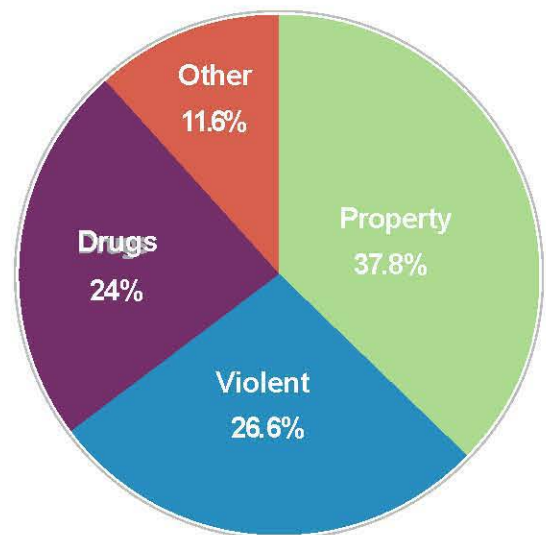
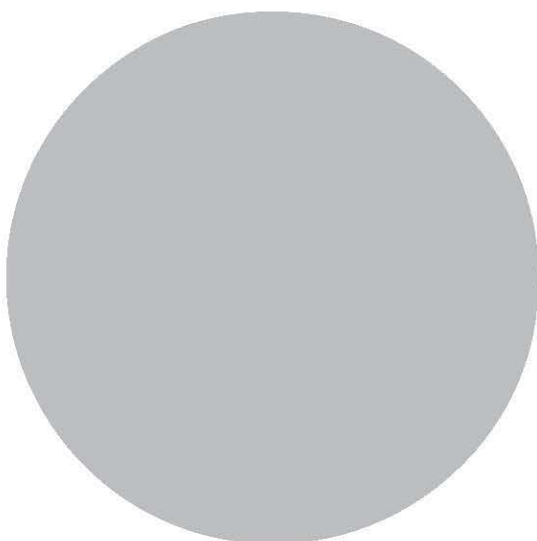
Offense	Count	Percentage
Robbery With Weapon	8,549	8.8%
Burglary of a Dwelling	7,860	8.1%
Capital (First Degree) Murder	7,340	7.6%
Manufacture, Sale or Purchase of Drugs	6,232	6.4%
Second Degree Murder	5,387	5.6%
Drug Trafficking	5,260	5.4%
Lewd and Lascivious Behavior	5,076	5.3%
Weapons Possession	3,754	3.9%
Capital Sexual Battery	3,225	3.3%
Aggravated Battery	3,184	3.3%

County	Count	Percentage
Duval	7,489	7.7%
Miami-Dade	7,344	7.6%
Broward	6,805	7.0%
Hillsborough	6,384	6.6%
Orange	5,514	5.7%
Pinellas	5,264	5.4%
Polk	4,638	4.8%
Palm Beach	4,100	4.2%
Volusia	2,911	3.0%
Brevard	2,908	3.0%

Community Supervision Statistics

Offense	Mean Age	Median Age	Percentage
Murder/Manslaughter	15 yrs	28.7 yrs	1.6%
Sexual Offense	10.1 yrs	34.7 yrs	4.5%
Robbery	6.4 yrs	25 yrs	3.3%
Violent Offenses	3.7 yrs	32.7 yrs	16.8%
Burglary	3.8 yrs	27.7 yrs	10.2%
Theft, Forgery, Fraud	4 yrs	33 yrs	28.2%
Drugs	2.8 yrs	32.2 yrs	23.9%
Weapons	3yrs	30.1 yrs	2.9%
Other Non-Violent	2.8 yrs	35.5 yrs	8.6%

Demographic	Percentage
Male	75.4%
Female	24.6%
White	62.9%
Black	31.4%
Other	5.7%
None	60.8%
1	20.9%
2	8.9%
3	4.4%
4 or more	5%



Finding an Inmate in State Prison, Federal Prison or County Jails

Inmates who committed felonies and are sentenced to at least a year and a day are sent to **state prison** in Florida, and are under the jurisdiction of the Florida Department of Corrections. To find an inmate in the state prison system in Florida, go to <http://www.dc.state.fl.us/OffenderSearch/InmateInfoMenu.aspx>.

Inmates who have committed federal crimes are sent to federal prisons which may be located in Florida. The Federal Bureau of Prisons website, which includes inmate locators, is www.bop.gov/.

Inmates who have not yet been sentenced, or who are charged with misdemeanors, and/or who have been sentenced to less than a year are housed in **county jails**. Click here for a list of all county sheriff's offices to find a specific county jail: <http://www.flsheriffs.org/sheriffs/florida-sheriff-directory>.